

LESSON 14-1

Practice and Problem Solving: A/B

1. $r = 3$; 243, 729, 2187
2. $r = \frac{1}{3}$; 12, 4, $\frac{4}{3}$
3. 192; 12
4. 1575
5. $d = 5$; 26, 31, 36
6. $d = -3$; -5, -8, -11
7. 1.5 ft
8. \$1871.77
9. B, C, D
10. $\frac{64}{3}$

LESSON 14-2

Practice and Problem Solving: A/B

1. $3(4)^0, 3(4)^1, 3(4)^2, 3(4)^3, 3(4)^4$;
 $f(n) = 3(4)^{n-1}$
2. $f(1) = 11$; $f(n) = f(n-1) + 2$ for $n \geq 2$.
3. $f(n) = 2.5(3.5)^{n-1}$
4. $f(n) = 27\left(\frac{1}{3}\right)^{n-1}$
5. $f(1) = -4$; $f(n) = f(n-1) + 0.5$ for $n \geq 2$
6. $r = 4$; $f(n) = 90(4)^{n-1}$
7. $r = \frac{1}{2}$; $f(n) = 16(0.5)^{n-1}$
8. $r = 3$; $f(n) = 2(3)^{n-1}$
9. $r = \frac{1}{3}$, $a_1 = 90$; $f(n) = 90\left(\frac{1}{3}\right)^{n-1}$
10. $r = 1.0025$; $f(n) = 18000(1.0025)^{n-1}$
11. $f(5) = \$18,180.68$
12. $f(60) = \$20,856.96$

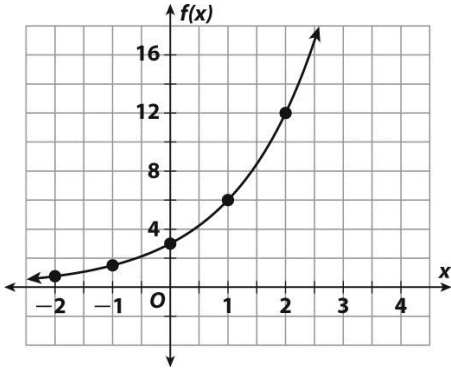
LESSON 14-3

Practice and Problem Solving: A/B

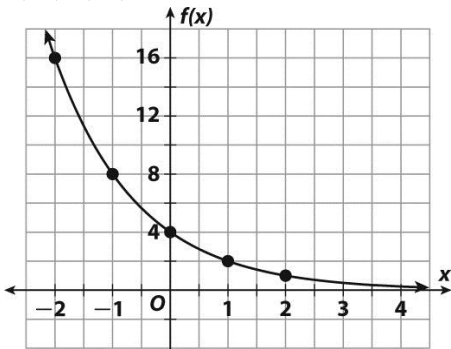
1. $y = 6(3)^x$

2. $y = 5.25(0.25)^x$

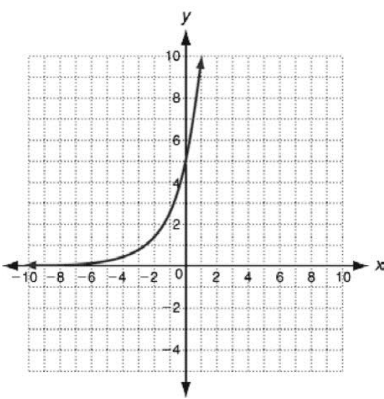
3. $\frac{3}{4}, \frac{3}{2}, 3, 6, 12$



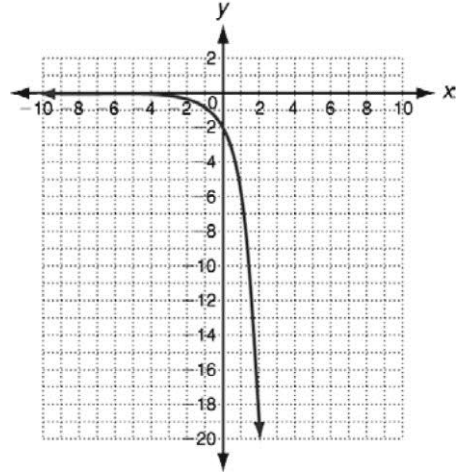
4. 16, 8, 4, 2, 1



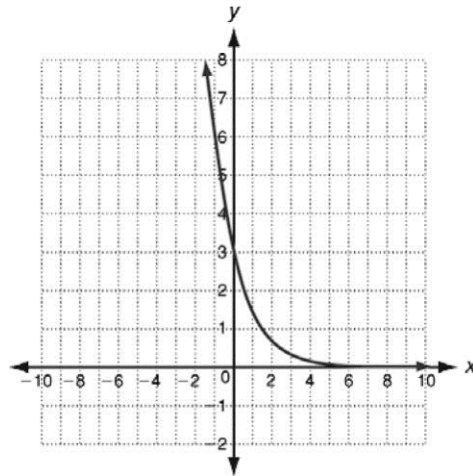
5.



6.



7.

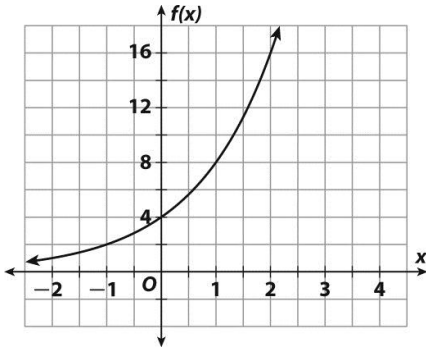


8. 3.6 ft

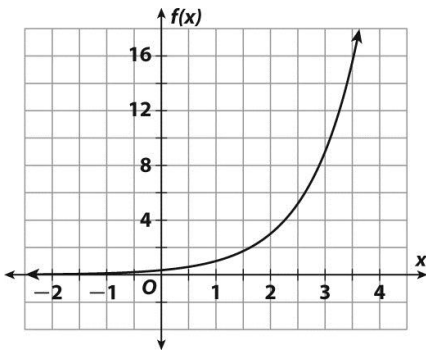
LESSON 14-4

Practice and Problem Solving: A/B

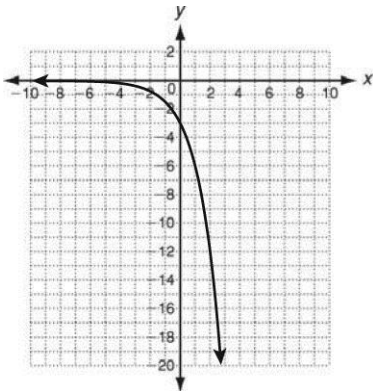
1. 1, 2, 4, 8, 16; $a = 4$, $b = 2$, y-intercept = 4; end behavior = $0, \infty$



2. $\frac{1}{27}, \frac{1}{9}, \frac{1}{3}, 1, 3$; $a = \frac{1}{3}$, $b = 3$, y-intercept = $\frac{1}{3}$; end behavior = $0, \infty$



3. $-\frac{3}{4}, -\frac{3}{2}, -3, -6, -12$; $a = -3$, $b = 2$, y-intercept = -3 ; end behavior = $0, -\infty$



4. 12, 6, 3, $\frac{3}{2}, \frac{3}{4}$; $a = 3$, $b = \frac{1}{2}$, y-intercept = 3; end behavior = $0, \infty$

