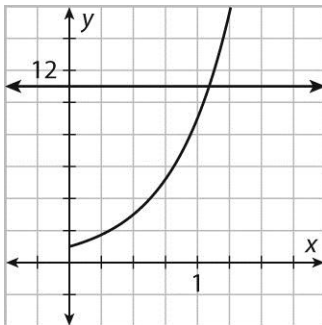


LESSON 15-1

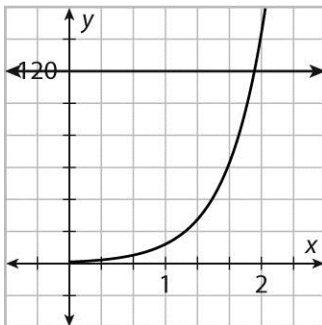
Practice and Problem Solving: A/B

1. $x = 4$
2. $x = 5$
3. $x = 4$
4. $x = 4$
5. $x = 3$
6. $x = 2$
7. $x = 2$
8. $x = 5$
9. $x = 3$
10. $f(x) = 11$; $g(x) = 9^x$;



$x \approx 1.1$

11. $f(x) = 120$; $g(x) = 12^x$;



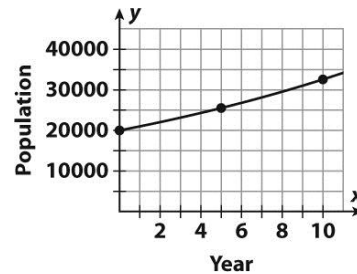
$x \approx 1.9$

12. $600(1.05)^x = 900$; 8.3 years
13. $20,000(1.035)^x = 40,000$; 20.1 years

LESSON 15-2

Practice and Problem Solving: A/B

1. $y = 650,000(1.04)^t$; sales \approx \$790,824.39
 D = set of real numbers $t \geq 0$
 R = set of real numbers $y \geq 650,000$
2. $y = 800(1.02)^x$;
 population \approx 901 students
 D = set of real numbers $t \geq 0$
 R = set of real numbers $y \geq 800$
3. $y = 2500(0.97)^t$;
 population \approx 2147 people
 D = set of real numbers $t \geq 0$
 R = set of real numbers $0 \leq y \leq 2500$
4. $y = 25,000(0.85)^t$; value \approx \$6,812.26
 D = set of real numbers $t \geq 0$
 R = set of real numbers $0 \leq y \leq 25,000$
5. $y = 20,000(1.05)^t$



6. $y = 45,000(0.8)^t$

