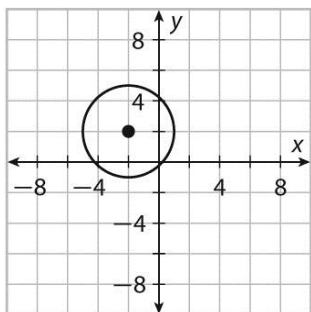


# MODULE 12 Quadratic Relations and Systems of Equations

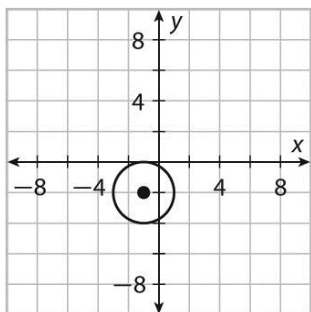
## LESSON 12-1

### Practice and Problem Solving: A/B

1.  $(x - 8)^2 + (y - 9)^2 = 100$
2.  $(x + 1)^2 + (y - 5)^2 = 625$
3.  $(x - 2)^2 + (y - 2)^2 = 25$
4.  $(x - 3)^2 + (y + 5)^2 = 356$
5.  $(x + 3)^2 + y^2 = 36$
6.  $(x - 6)^2 + (y + 1)^2 = 64$
7.  $(x + 2)^2 + (y - 2)^2 = 9$



8.  $(x + 1)^2 + (y + 2)^2 = 4$

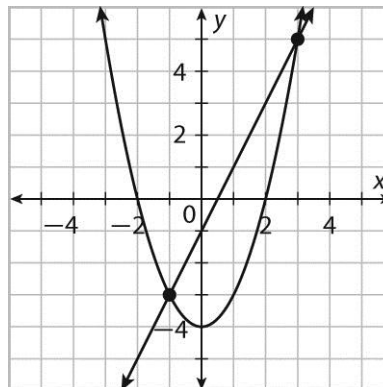


9. D, E, F

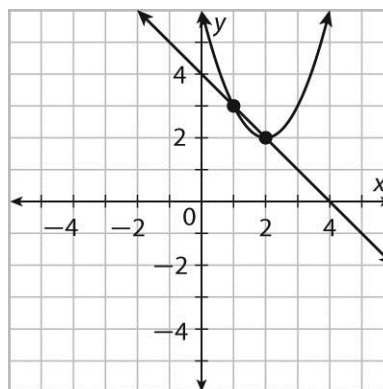
## LESSON 12-3

### Practice and Problem Solving: A/B

1. (3, 5), (-1, -3)



2. (1, 3), (2, 2);



3. (3, 2), (-3, -2)
4. (1, -10), (-1, 10)
5. (9, 12), (-9, -12)
6. (-5, 0), (123, 16)
7. (5, 3), (-3, -5)
8. no solution
9. Yes, a collision would occur after 1.875 sec.